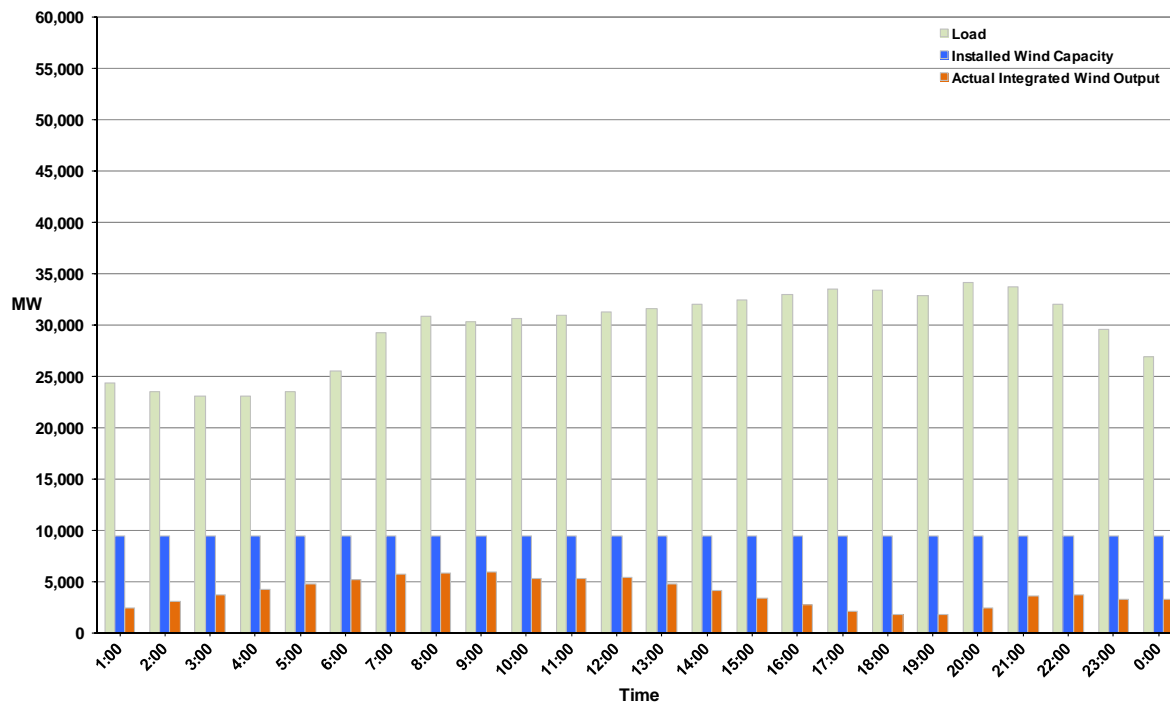




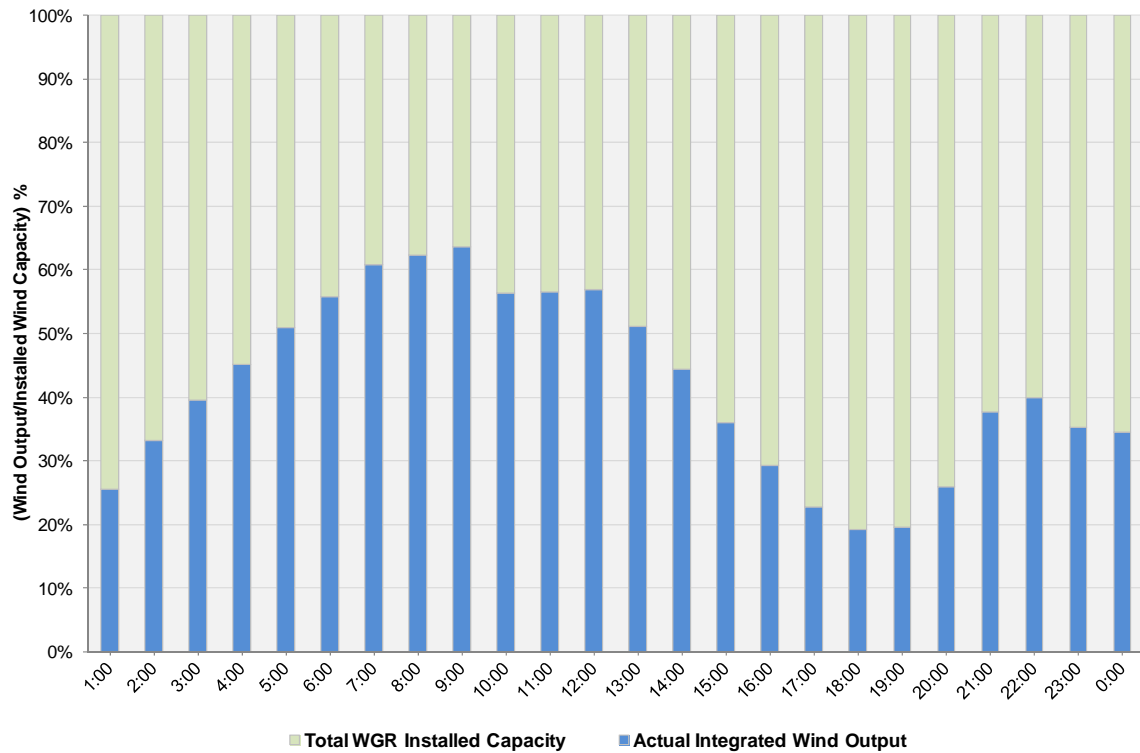
ERCOT Grid Operations Wind Integration Report: 10/20/11

Peak Load	34,101 MW
Load Peak Hour	20
Wind over Peak	2,442 MW
Wind Record 10/07/11	7,400 MW
Max Wind Value	6,260 MW
Wind Peak Time	07:47
Wind Integration %	20.61%

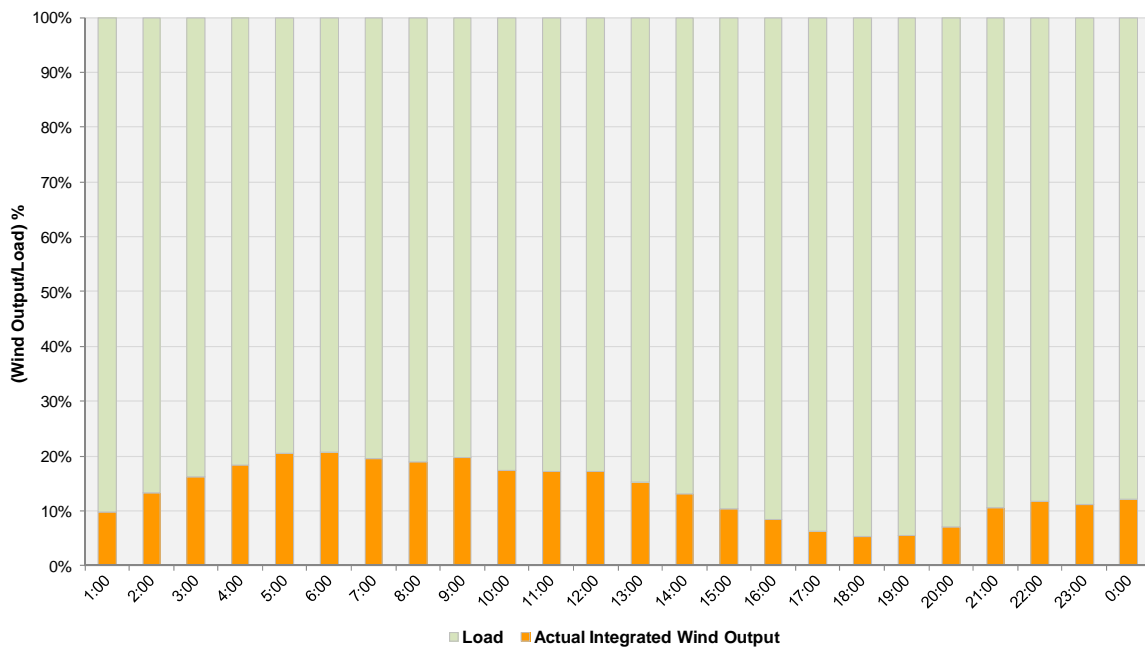
Hourly Average Actual Load vs. Actual Wind Output
10-20-2011



Actual Wind Output as a Percentage of the Total Installed Wind Capacity
10-20-2011



Actual Wind Output as a Percentage of the ERCOT Load
10-20-2011



ERCOT Load vs. Actual Wind Output 10/13/2011 - 10/20/2011

